



Engineering - Landscape Architecture - Surveying

7 Waldo Street, St. Augustine, FL 32084 | 904.826.1334 | www.matthews.dccm.com

mdg.cei@dccm.com

LICENSE #26535, LB8590, LA6666877

General Information

Project Name	24015 Double Branch CDD		
Prepared By	Branden J Marcinell		
Date Of Visit	06/10/2025 11:57 AM EDT		
Date Prepared	06/23/2025 EDT		
Weather	Cloudy	Temp	93
Site Conditions		Date of Last Report	N/A
Present at Site			

Site Notes

N/A

Corrected since last report

N/A

Observations

Drainage

1 1 Structure functioning as designed.

Hardscape

15 25 Paver settling. Correct or monitor for worsening condition. Repair if progresses to trip hazard.

16 26 Minimal separation between concrete flags in sidewalk. Suggest shaving down to reduce change in elevations for trip hazard. Monitor in future inspections.

23 34 Bench support is loose. Monitor under future inspections.

24 35 Bench support is loose. Monitor in future inspections.

Observations**25****36**

Depression and cracking in tennis court surface. Monitor in future inspections.

26**37**

Cracking in basketball court surface. Observe in future inspections.

Roadway**20****30**

Degraded pavement/depression near inlet in parking lot. Observe under future reviews.

Storm**11****21**

Photo taken of pond for record purposes, only in comparison for future visits.

12**22**

Photo taken of pond for record purposes, only in comparison for future visits.

13**23**

Photo taken of pond for record purposes, only in comparison for future visits.

Needs Action**Drainage****2****4**

Weir block by debris. Removed debris and vegetation to allow weir to operate as designed.

3**5**

Weir blocked by debris. Removed debris, clean out structure to allow weir to operate as designed.

4**6**

Control structure weir is blocked by debris. Remove debris to allow weir to function as designed.

6**8**

Control structure weir blocked by vegetation. Remove vegetation to allow control structure to function as designed.

7**11**

Confirmed clog at both inlets and discharging MES. CDD to facilitate vac truck to clear the pipe lines. This should be addressed immediately.

Needs Action**8** 20

Outflow appears to be bypassing aluminum weir plate underneath through original concrete weir. Tightening the aluminum plate against the concrete weir for a watertight seal will be required for proper control structure, design function.

Erosion**9** 16

Pond bank washout possibly related to homeowner irrigation. CDD to reach out to homeowner and run corner sprinkler to see if that is causing the washout from overspray of the area or a leak in the irrigation system. This pin location was formerly classified as a possible animal burrow has been cleared now that the issue is confirmed to not be a burrow.

Hardscape**14** 24

Stairs appear to be settling and separating from pavers. Suggest inspection for stability.

21 32

Bench support is loose. Re-stabilize / secure for support.

Landscape**5** 7

Erosion in pond bank. Re-stabilize to protect against erosion.

Misc**5** 7

Erosion in pond bank. Re-stabilize to protect against erosion.

Safety**10** 19

Exposed rust with sharp edges. Rusted support corner for walkway landing. Repair to protect from sharp edges and monitor for structural support in future inspections.

17 27

Railing support is loose needs to be re-secured.

18 28

Missing blue reflector in roadway to identify hydrant location. Add blue reflector to roadway.

22 33

Exposed metal rust with sharp edges. Remove and re-secure trashcan.

Storm**7** 11

Confirmed clog at both inlets and discharging MES. CDD to facilitate vac truck to clear the pipe lines. This should be addressed immediately.

Needs Action

8

20

Outflow appears to be bypassing aluminum weir plate underneath through original concrete weir. Tightening the aluminum plate against the concrete weir for a watertight seal will be required for proper control structure, design function.

19

29

Erosion present around MES in the pond. Backfill and stabilize around edges of MES to protect against further erosion and possible concrete cracking.

Map Overview



Action Items

1

1

Observation


Pin Type: General

Categories:

Drainage

Location:

Created by:



Mike Silverstein
Senior Construction Inspector

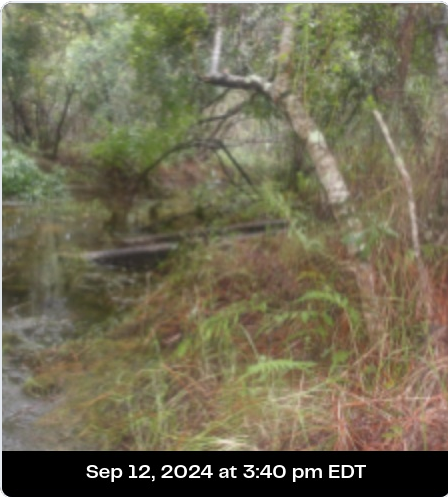
Sep 13, 2024 at 8:37 am EDT



Notes:

Mike Silverstein September 13, 2024 8:37 AM EDT
Structure functioning as designed.

Photos:



2

4

Needs Action


Pin Type: General

Categories:

Drainage

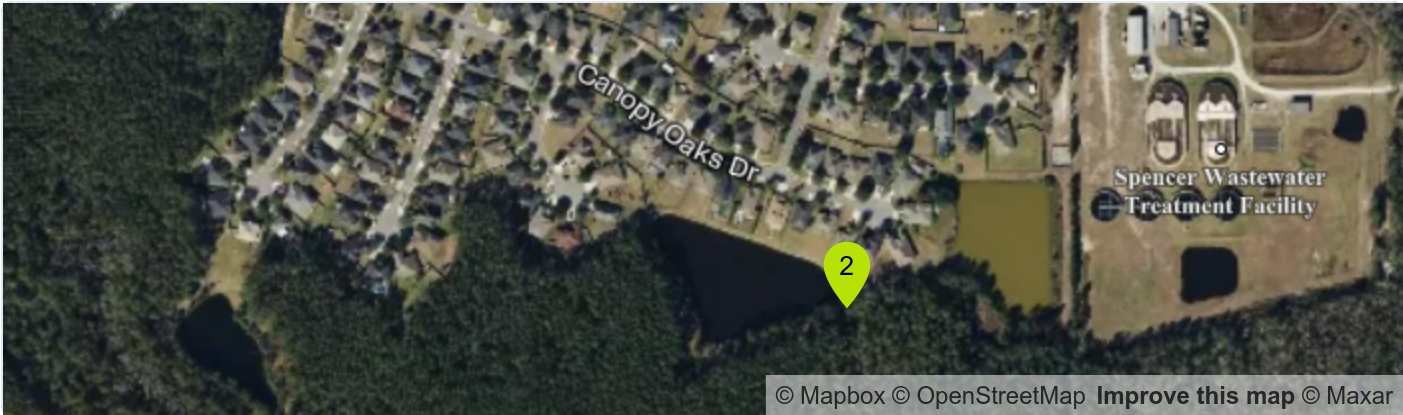
Location:

Created by:



Branden J Marcinell

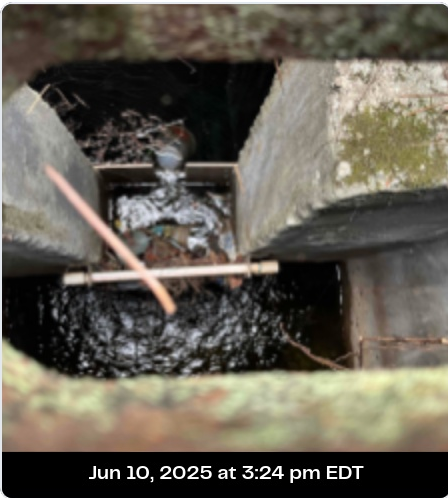
Jun 10, 2025 at 3:29 pm EDT



Notes:

Branden J Marcinell June 10, 2025 3:29 PM EDT
Weir block by debris. Removed debris and vegetation to allow weir to operate as designed.

Photos:



3

5


Needs Action

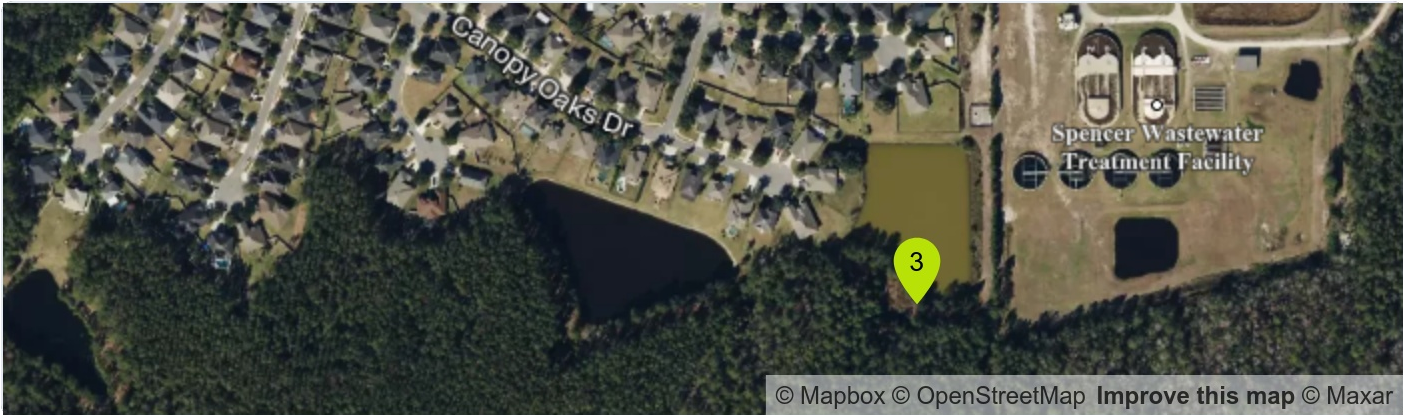
Pin Type: General

Categories:

Drainage

Location:

Created by:
 Branden J Marcinell
Jun 10, 2025 at 3:22 pm EDT



Notes:

Branden J Marcinell June 10, 2025 3:22 PM EDT
Weir blocked by debris. Removed debris, clean out structure to allow weir to operate as designed.

Photos:



4

6

Needs Action


Pin Type: General

Categories:

Drainage

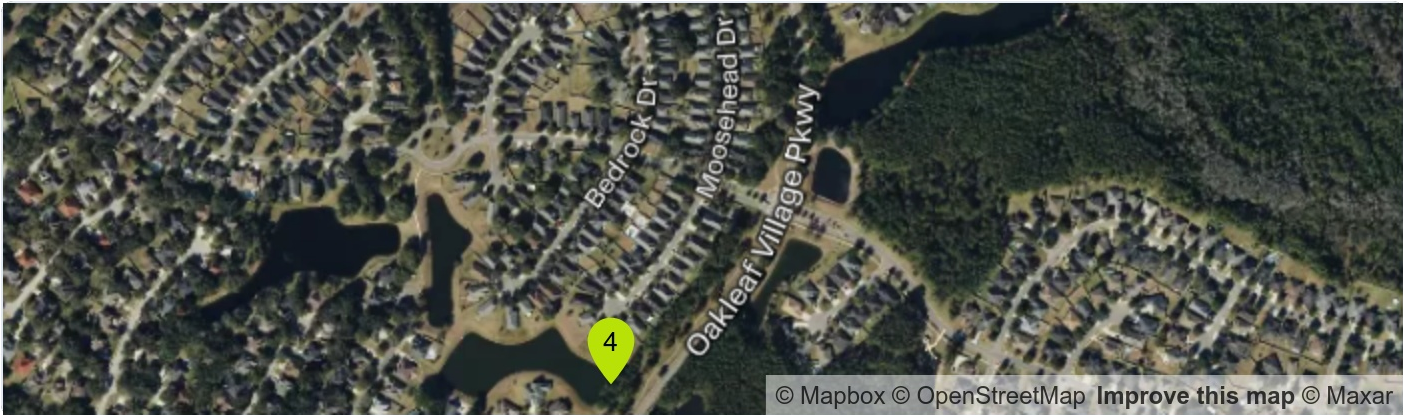
Location:

Created by:



Branden J Marcinell

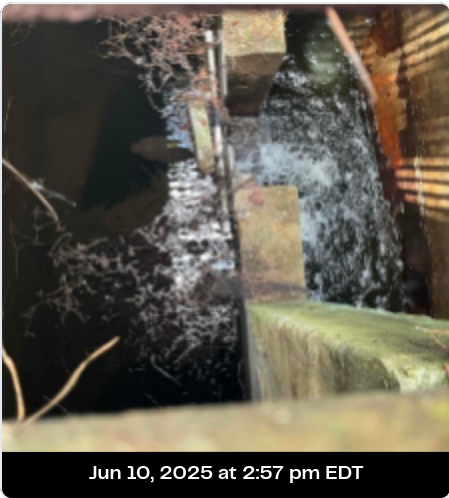
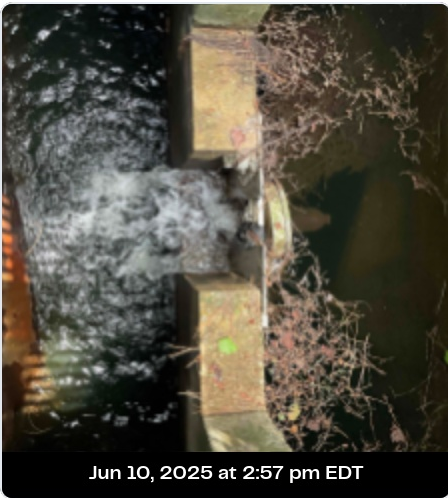
Jun 10, 2025 at 3:06 pm EDT



Notes:

Branden J Marcinell June 10, 2025 3:06 PM EDT
Control structure weir is blocked by debris. Remove debris to allow weir to function as designed.

Photos:



4

6

Needs Action*(continued)*

Created by:



Branden J Marcinell

Jun 10, 2025 at 3:06 pm EDT

Pin Type: General

Photos:



Jun 10, 2025 at 2:55 pm EDT

5

7

Needs Action


Pin Type: General

Categories:

- Landscape
- Misc

Location:

Created by:



Branden J Marcinell

Jun 10, 2025 at 2:29 pm EDT



Notes:

Branden J Marcinell

June 10, 2025 2:29 PM EDT

Erosion in pond bank. Re-stabilize to protect against erosion.


Photos:



6

8

Needs Action

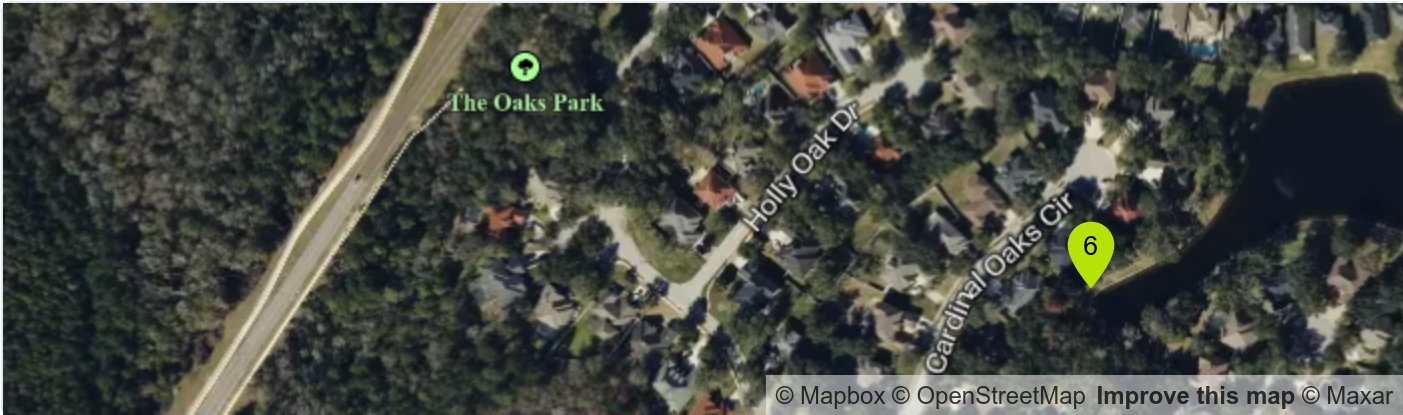
Created by:
 Branden J Marcinell
Jun 10, 2025 at 2:22 pm EDT

Pin Type: General

Categories:

Drainage

Location:



Notes:

Branden J Marcinell June 10, 2025 2:22 PM EDT
Control structure weir blocked by vegetation. Remove vegetation to allow control structure to function as designed.

Photos:



Jun 10, 2025 at 2:21 pm EDT



Jun 10, 2025 at 2:21 pm EDT



Jun 10, 2025 at 2:14 pm EDT

7

11

Needs Action

Pin Type: General

Categories:

Drainage

Storm

Location:

Created by:

Mike Silverstein
Senior Construction Inspector

May 2, 2025 at 8:43 am EDT

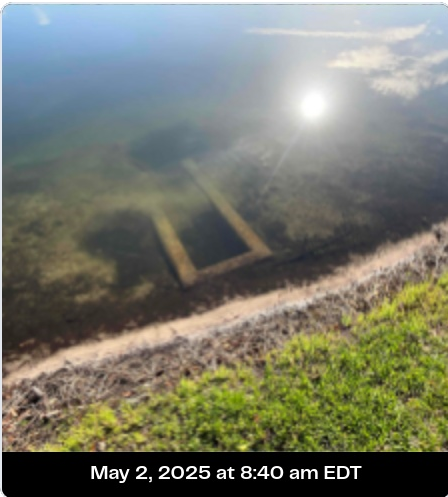


Notes:

Mike Silverstein May 2, 2025 8:43 AM EDT

Confirmed clog at both inlets and discharging MES. CDD to facilitate vac truck to clear the pipe lines. This should be addressed immediately.

Photos:



7

11

Needs Action(continued)

Created by:



Mike Silverstein

Senior Construction Inspector

May 2, 2025 at 8:43 am EDT

Pin Type: General

Photos:



May 2, 2025 at 8:39 am EDT



May 2, 2025 at 8:39 am EDT

8

20

Needs Action

Created by:



Branden J Marcinell

Jun 10, 2025 at 1:57 pm EDT

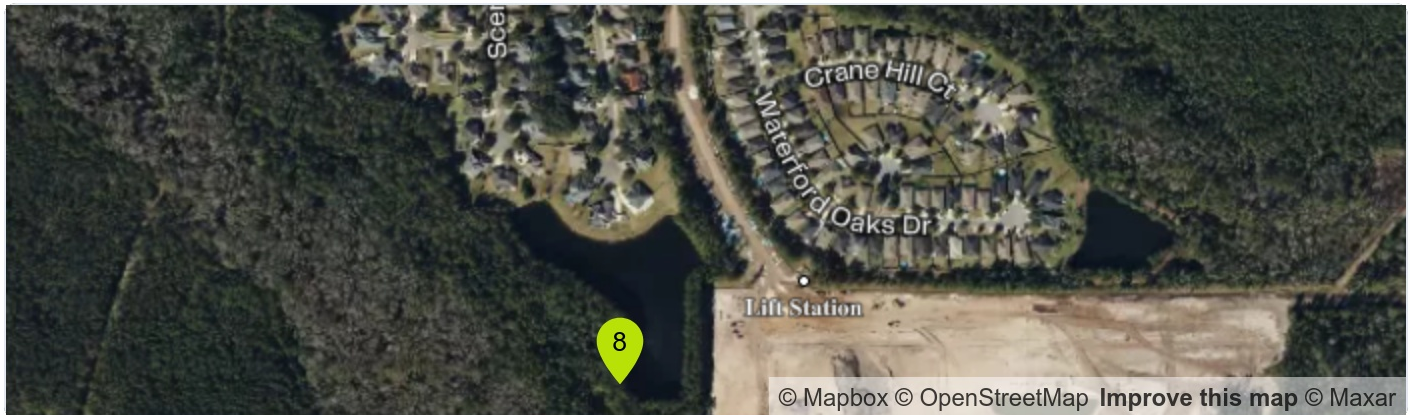
Pin Type: General

Categories:

Drainage

Storm

Location:



Notes:

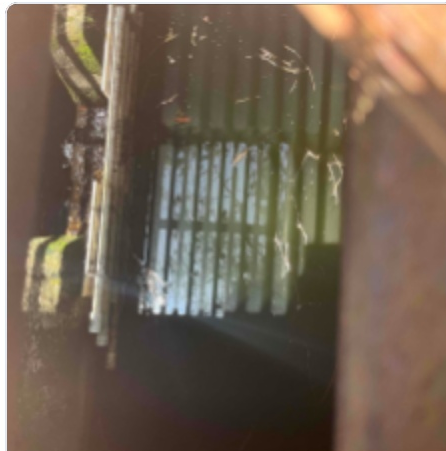
Branden J Marcinell June 10, 2025 1:57 PM EDT

Outflow appears to be bypassing aluminum weir plate underneath through original concrete weir. Tightening the aluminum plate against the concrete weir for a watertight seal will be required for proper control structure, design function.

Photos:



Jun 10, 2025 at 1:56 pm EDT



Jun 10, 2025 at 1:56 pm EDT



Jun 10, 2025 at 1:56 pm EDT

9

16

Needs Action

Created by:



Mike Silverstein
Senior Construction Inspector

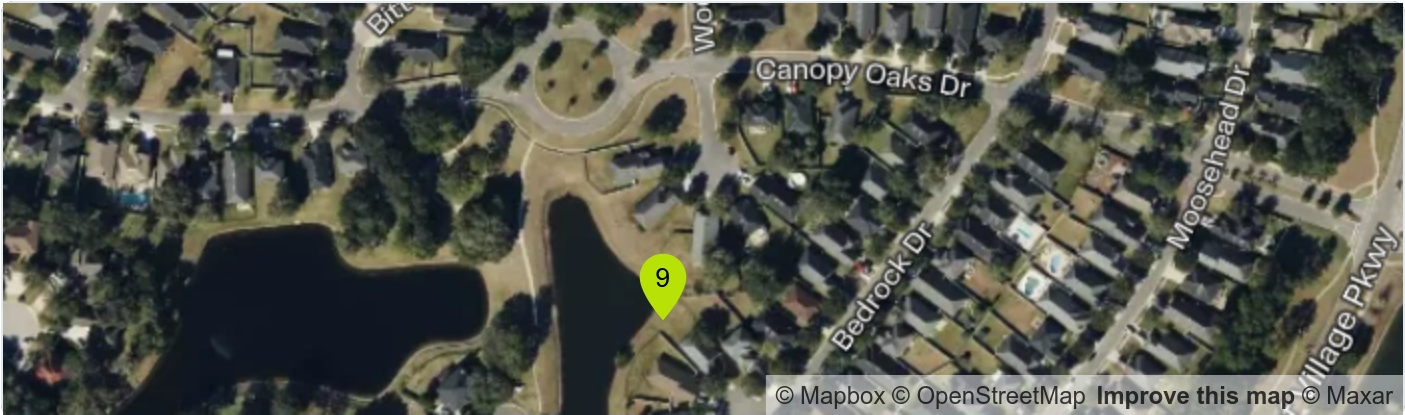
May 2, 2025 at 2:23 pm EDT

Pin Type: General

Categories:

Erosion

Location:



Notes:

Mike Silverstein May 2, 2025 2:23 PM EDT

Pond bank washout possibly related to homeowner irrigation. CDD to reach out to homeowner and run corner sprinkler to see if that is causing the washout from overspray of the area or a leak in the irrigation system. This pin location was formerly classified as a possible animal burrow has been cleared now that the issue is confirmed to not be a burrow.

Photos:



May 2, 2025 at 8:24 am EDT



May 2, 2025 at 8:24 am EDT



May 2, 2025 at 8:23 am EDT

10

19

Needs Action


Pin Type: General

Categories:

Safety

Location:

Created by:

 Branden J Marcinell

Jun 10, 2025 at 2:41 pm EDT

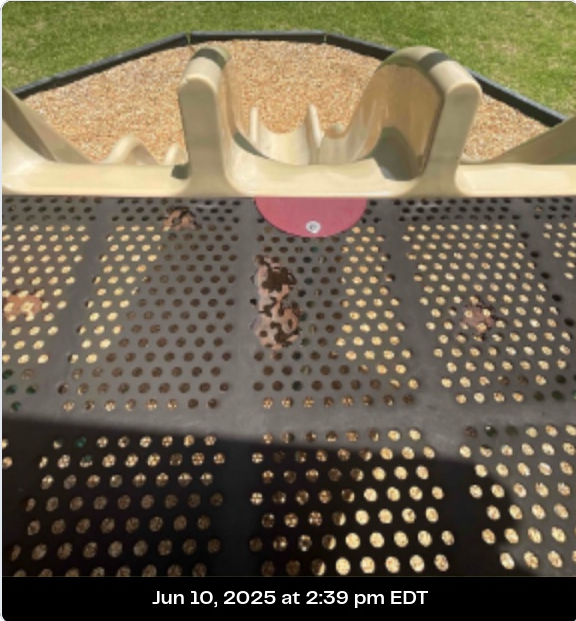


Notes:

Branden J Marcinell June 10, 2025 2:41 PM EDT

Exposed rust with sharp edges. Rusted support corner for walkway landing. Repair to protect from sharp edges and monitor for structural support in future inspections.

Photos:





21

Observation

Created by:



Branden J Marcinell

Jun 10, 2025 at 3:41 pm EDT

Pin Type: General

Categories:

Storm

Location:



Notes:

Branden J Marcinell June 10, 2025 3:41 PM EDT
Photo taken of pond for record purposes, only in comparison for future visits.

Photos:



Jun 10, 2025 at 3:39 pm EDT



Jun 10, 2025 at 3:39 pm EDT

12 **22** Observation

Pin Type: General

Categories:

Storm

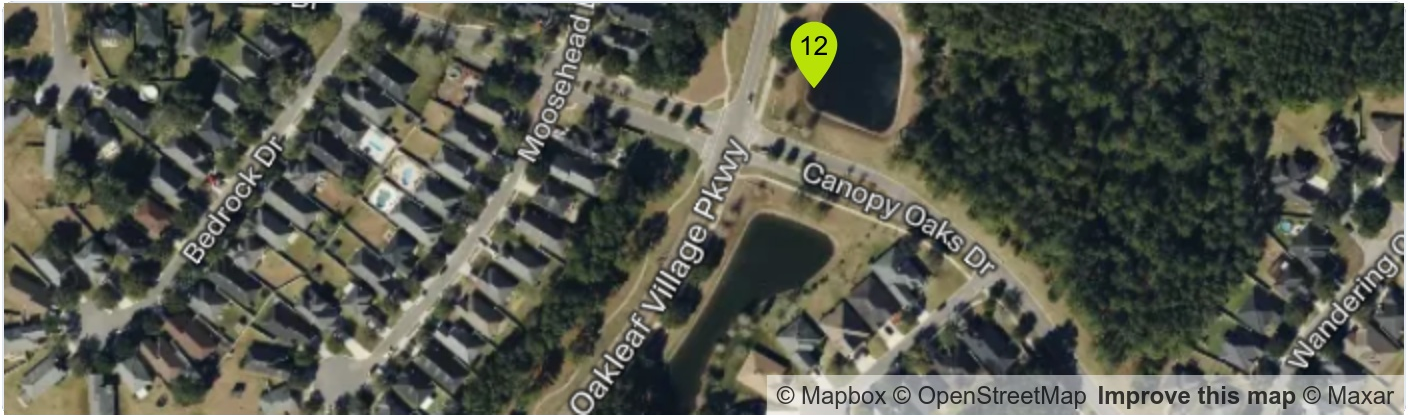
Location:

Created by:



Branden J Marcinell

Jun 10, 2025 at 3:41 pm EDT



Notes:

Branden J Marcinell June 10, 2025 3:41 PM EDT

Photo taken of pond for record purposes, only in comparison for future visits.

Photos:



Jun 10, 2025 at 3:41 pm EDT

13

23

Observation


Pin Type: General

Categories:

Storm

Location:

Created by:



Branden J Marcinell

Jun 11, 2025 at 11:18 am EDT



Notes:

Branden J Marcinell June 11, 2025 11:18 AM EDT
Photo taken of pond for record purposes, only in comparison for future visits.

Photos:



14

24


Needs Action

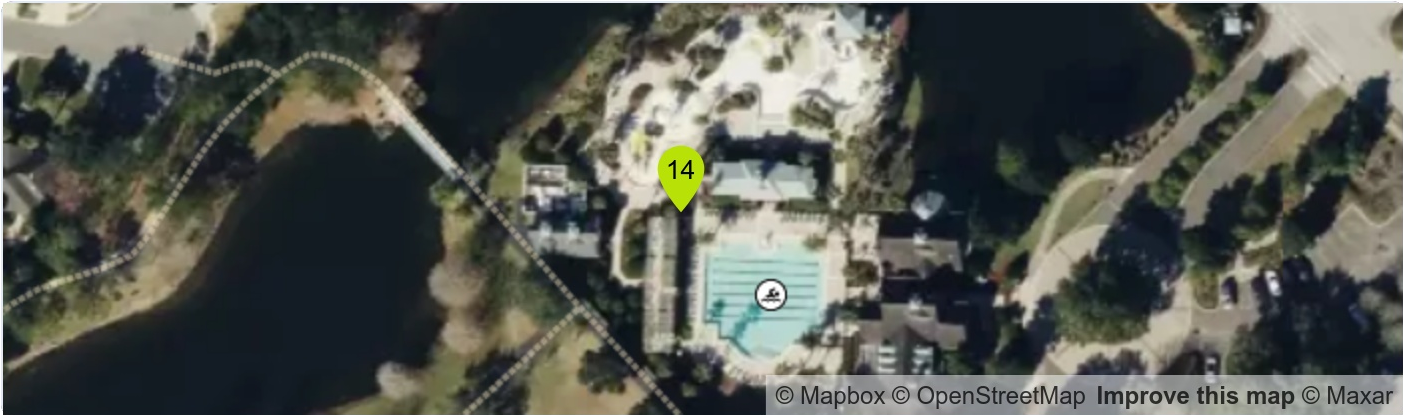
Pin Type: General

Categories:

Hardscape

Location:

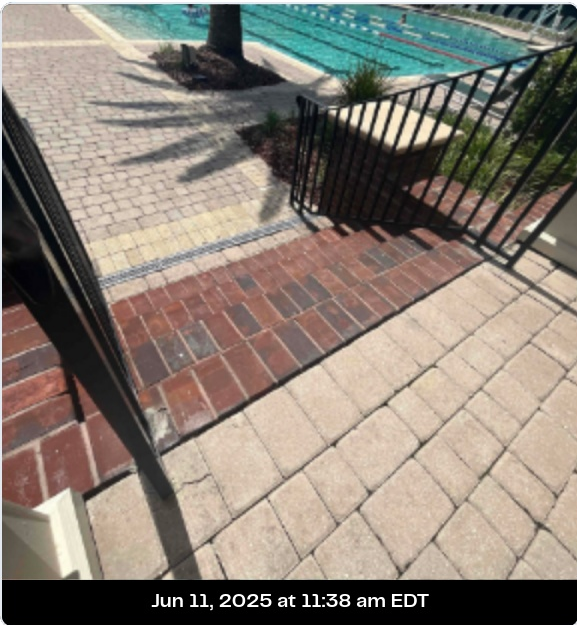
Created by:
 Branden J Marcinell
Jun 11, 2025 at 11:39 am EDT



Notes:

Branden J Marcinell June 11, 2025 11:39 AM EDT
Stairs appear to be settling and separating from pavers. Suggest inspection for stability.

Photos:



15

25

Observation


Pin Type: General

Categories:

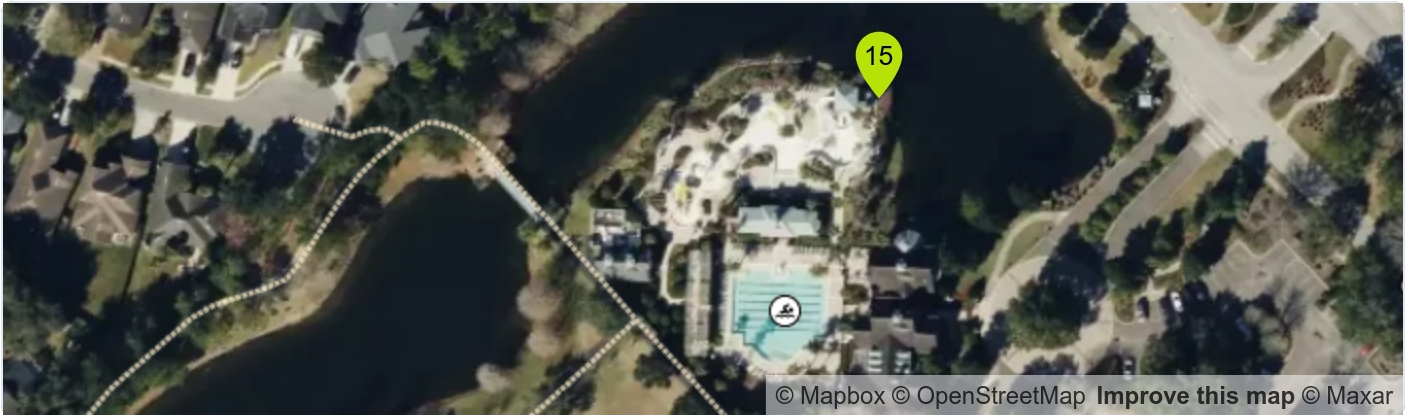
Hardscape

Location:

Created by:

 Branden J Marcinell

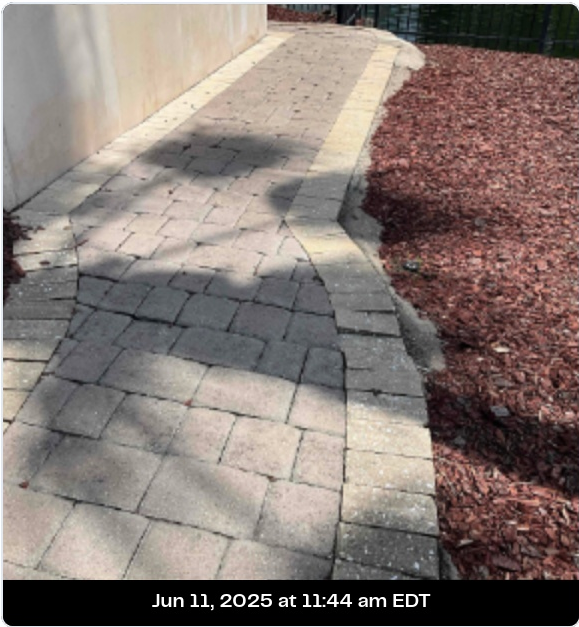
Jun 11, 2025 at 11:45 am EDT



Notes:

Branden J Marcinell June 11, 2025 11:45 AM EDT
Paver settling. Correct or monitor for worsening condition. Repair if progresses to trip hazard.

Photos:



16

26

Observation

Pin Type: General

Categories:

Hardscape

Location:

Created by:



Branden J Marcinell

Jun 11, 2025 at 11:58 am EDT

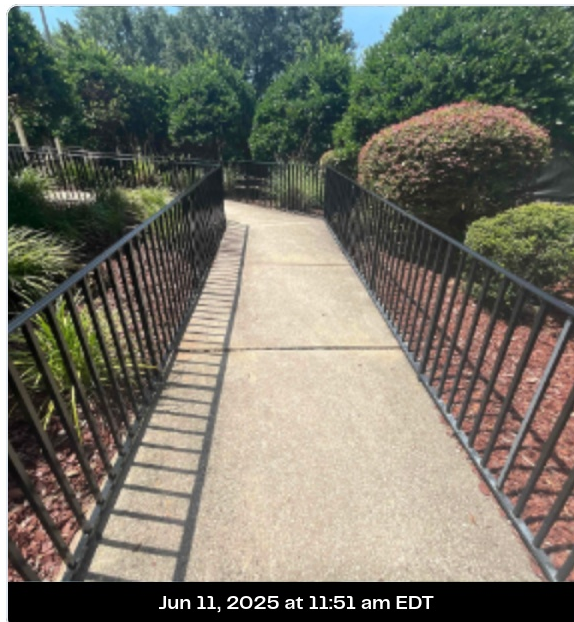


Notes:

Branden J Marcinell June 11, 2025 11:58 AM EDT

Minimal separation between concrete flags in sidewalk. Suggest shaving down to reduce change in elevations for trip hazard.
Monitor in future inspections.

Photos:



17

27

Needs Action


Pin Type: General

Categories:

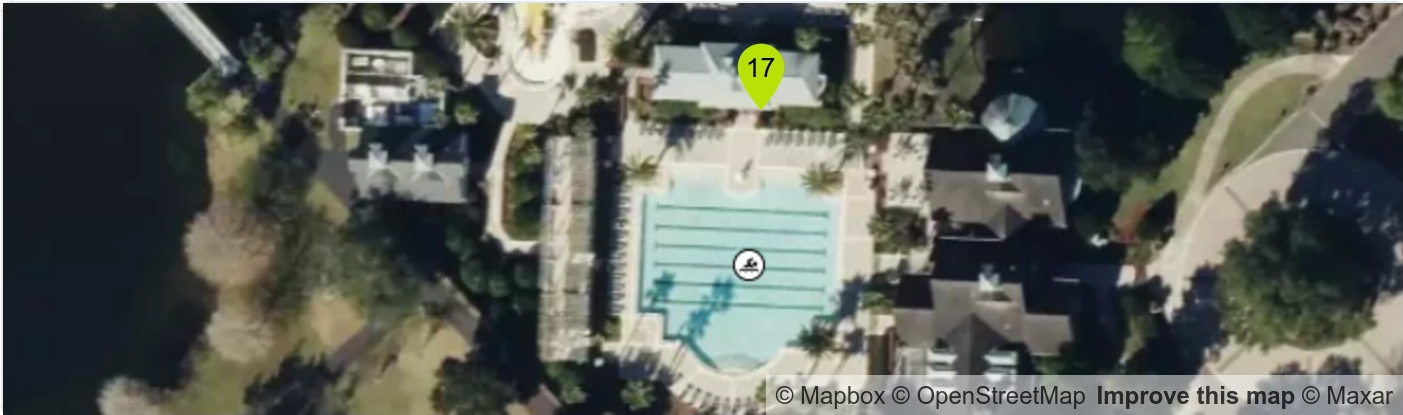
Safety

Location:

Created by:

 Branden J Marcinell

Jun 11, 2025 at 11:58 am EDT



Notes:

Branden J Marcinell June 11, 2025 11:58 AM EDT
Railing support is loose needs to be re-secured.

Photos:



18

28

Needs Action

Created by:



Branden J Marcinell

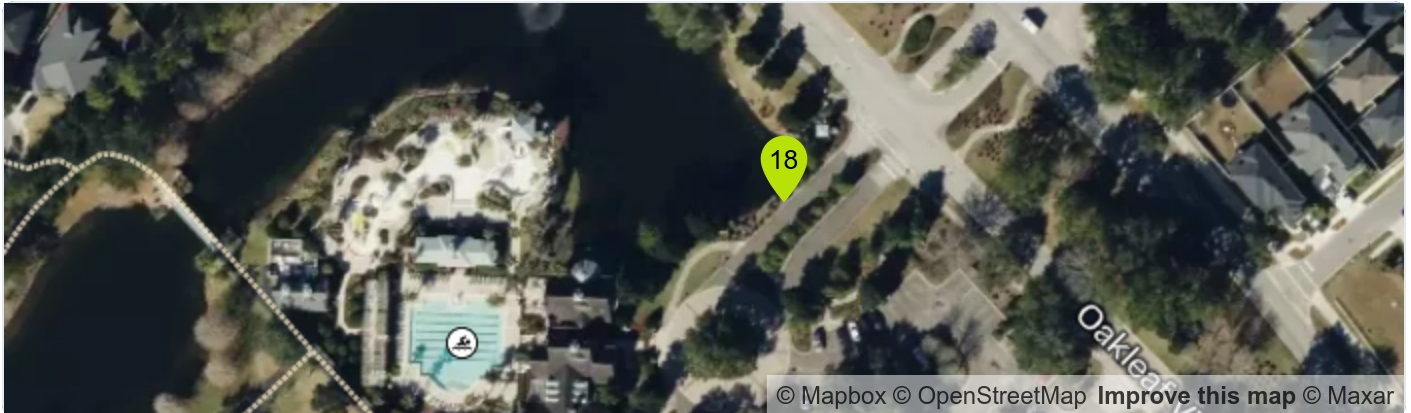
Jun 11, 2025 at 11:59 am EDT

Pin Type: General

Categories:

Safety

Location:



Notes:

Branden J Marcinell June 11, 2025 11:59 AM EDT

Missing blue reflector in roadway to identify hydrant location. Add blue reflector to roadway.

Photos:



19

29

Needs Action

Created by:



Branden J Marcinell

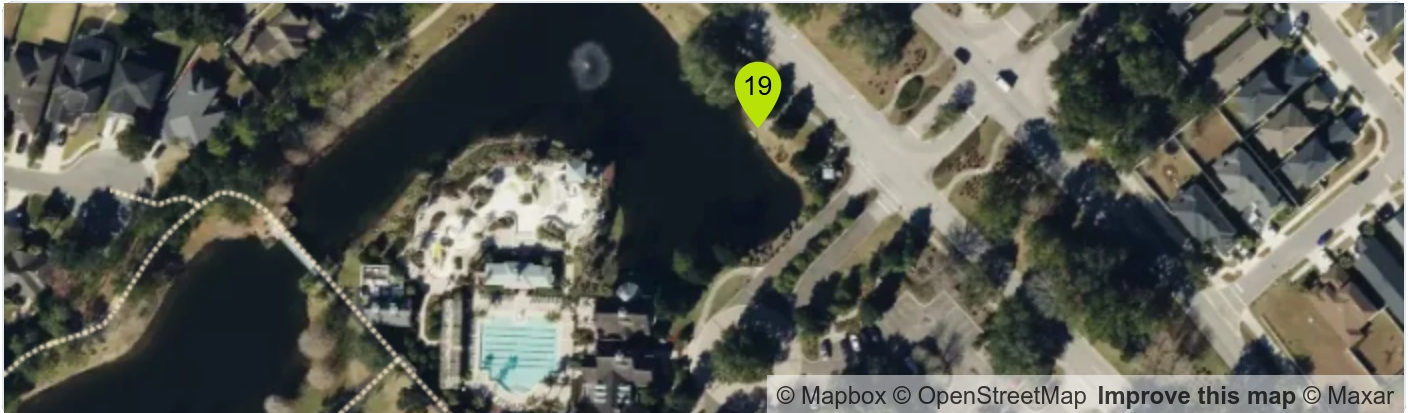
Jun 11, 2025 at 12:02 pm EDT

Pin Type: General

Categories:

Storm

Location:



Notes:

Branden J Marcinell June 11, 2025 12:02 PM EDT

Erosion present around MES in the pond. Backfill and stabilize around edges of MES to protect against further erosion and possible concrete cracking.

Photos:



Jun 11, 2025 at 12:01 pm EDT



Jun 11, 2025 at 12:01 pm EDT



30

Observation

Pin Type: General

Categories:

Roadway

Location:

Created by:



Branden J Marcinell

Jun 11, 2025 at 12:11 pm EDT



Notes:

Branden J Marcinell June 11, 2025 12:11 PM EDT
Degraded pavement/depression near inlet in parking lot. Observe under future reviews.

Photos:



21

32

Needs Action


Pin Type: General

Categories:

Hardscape

Location:

Created by:

 Branden J Marcinell

Jun 11, 2025 at 12:12 pm EDT



Notes:

Branden J Marcinell June 11, 2025 12:12 PM EDT
Bench support is loose. Re-stabilize / secure for support.

Photos:



22 **33** **Needs Action**

Pin Type: General

Categories:

Safety

Location:

Created by:



Branden J Marcinell

Jun 11, 2025 at 12:33 pm EDT



Notes:

Branden J Marcinell June 11, 2025 12:33 PM EDT

Exposed metal rust with sharp edges. Remove and re-secure trashcan.

Photos:



Jun 11, 2025 at 12:32 pm EDT

23

34

Observation


Pin Type: General

Categories:

Hardscape

Location:

Created by:



Branden J Marcinell

Jun 11, 2025 at 12:36 pm EDT



Notes:

Branden J Marcinell

June 11, 2025 12:36 PM EDT

Bench support is loose. Monitor under future inspections.

Photos:



24

35

Observation


Pin Type: General

Categories:

Hardscape

Location:

Created by:



Branden J Marcinell

Jun 11, 2025 at 12:39 pm EDT



Notes:

Branden J Marcinell

June 11, 2025 12:39 PM EDT

Bench support is loose. Monitor in future inspections.

Photos:



25

36

Observation


Pin Type: General

Categories:

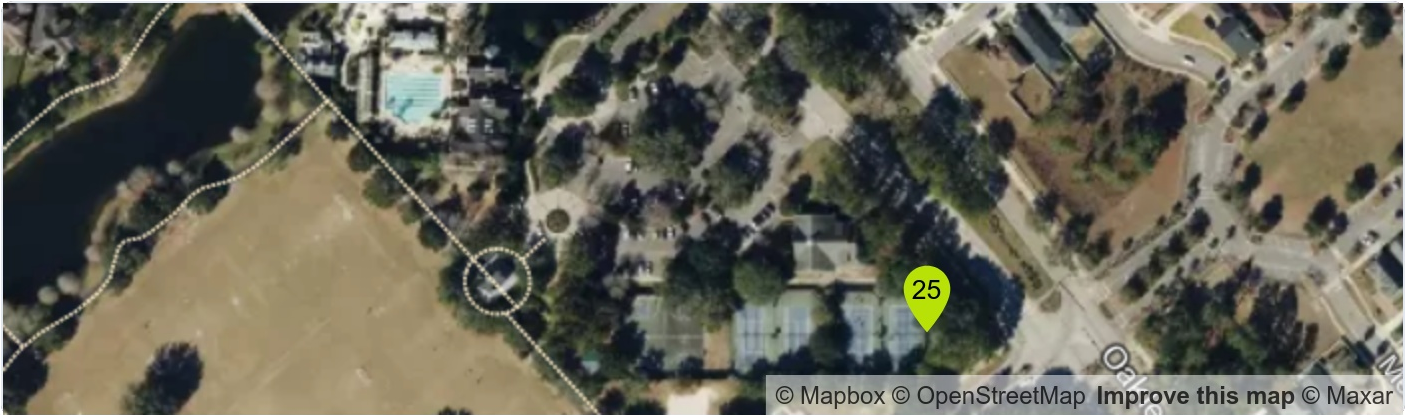
Hardscape

Location:

Created by:

 Branden J Marcinell

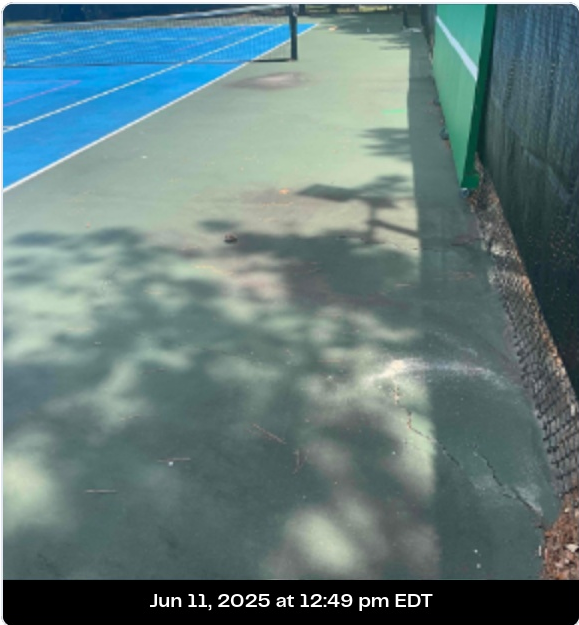
Jun 11, 2025 at 12:50 pm EDT



Notes:

Branden J Marcinell June 11, 2025 12:50 PM EDT
Depression and cracking in tennis court surface. Monitor in future inspections.

Photos:



26

37

Observation


Pin Type: General

Categories:

Hardscape

Location:

Created by:

 Branden J Marcinell

Jun 11, 2025 at 12:53 pm EDT



Notes:

Branden J Marcinell June 11, 2025 12:53 PM EDT
Cracking in basketball court surface. Observe in future inspections.

Photos:

